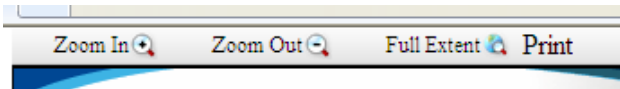


Map Viewer User Guide

Map Navigation & Tool Bar

Toolbar



- Pan

Left click on the map and hold down the mouse button and drag the map to where you want it to pan to.

- Zoom in

Scroll up on the mouse scroll wheel to zoom in.

Or

Click on the Zoom In Tool on the tool bar and drag a zoom box on the map. Release the mouse button to zoom in

- Zoom Out

Scroll down on the mouse scroll wheel to zoom out.

Or

Click on the Zoom Out Tool on the tool bar and drag a zoom box on the map. Release the mouse button to zoom out.

- Full Extent

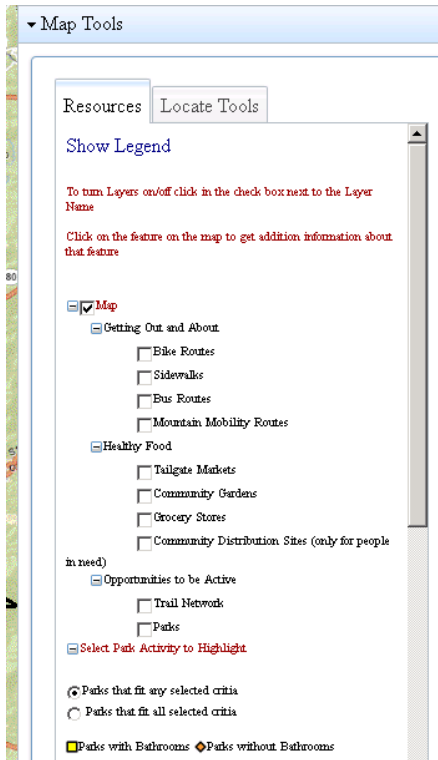
Click on the Full Extent Tool on the tool bar to get back to original extent of the map


- Print Map

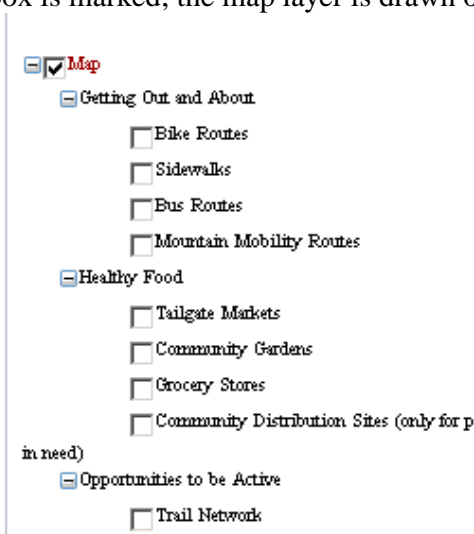
Click on the Print Tool on the tool bar

Map Tools

Resource Tab: There are two tabs on in the Map Tools panel. The top tab is the Resource tab. The Resource tab stores all the layers available on the map.



Turn Layers On/OFF: Click on the  to expand the list of available layers. Each layer has a check box, once the check box is marked; the map layer is drawn on the map.



Select Park Activity: When you click the check box next to the park activity the parks with that activity available will be highlighted on the map.

Overall Park Filtering by Attributes

Parks that fit any selected criteria
 Parks that fit all selected criteria

Parks with Bathrooms Parks without Bathrooms

<input type="checkbox"/> AMPHITHEATER	<input type="checkbox"/> BASKETBALL
<input type="checkbox"/> BOATING	<input type="checkbox"/> CAMPING
<input type="checkbox"/> FOOTBALL	<input type="checkbox"/> FISHING
<input type="checkbox"/> GOLF	<input type="checkbox"/> GYMNASIUM
<input type="checkbox"/> HIKING	<input type="checkbox"/> HORSESHOES
<input type="checkbox"/> PICNIC	<input type="checkbox"/> PLAYGROUND
<input type="checkbox"/> RIVER ACCESS	<input type="checkbox"/> SOFTBALL
<input type="checkbox"/> SHUFFLEBOARD	<input type="checkbox"/> SOCCER
<input type="checkbox"/> SWIMMING POOL	<input type="checkbox"/> SWIMMING ACCESS
<input type="checkbox"/> STAGE	<input type="checkbox"/> TENNIS
<input type="checkbox"/> VOLLEYBALL	<input type="checkbox"/> PRO SPORTS
<input type="checkbox"/> ZOO	<input type="checkbox"/> DISC GOLF
<input type="checkbox"/> WALKING PATH	<input type="checkbox"/> WATER FEATURE
<input type="checkbox"/> DOG PARK	<input type="checkbox"/> SKATE PARK
<input type="checkbox"/> BIKING	
<input type="checkbox"/> RESTROOM	<input type="checkbox"/> PARKING
<input type="checkbox"/> HANDICAP	<input type="checkbox"/> FEE
<input type="checkbox"/> DOG FRIENDLY	<input type="checkbox"/> HORSEBACK RIDING
<input type="checkbox"/> CLIMBING WALL	

Show Legend: Click on the Show Legend link to display a legend for the layers that are turned on

Locate Tools: This tab houses the search tools. You can search for Parks/Grocery Store/ Farmers Markets within a specific drive time from your location or given address.

Resources **Locate Tools**


Find Healthy Living Opportunities within a certain drive time of a specific address or location.

Step 1: Search For:

Park
 Grocery Store
 Farmers Market

Step 2: Find Location:

Enter Address:

or  Click the button then click on the map or use your current location

Step 3: Select Drive Times:

Miles

Step 4: Click the Button to Find

Follow the steps in the tool panel to conduct your search


Resources **Locate Tools**


Step 1: Search For:

Park
 Grocery Store
 Farmers Market

Step 2: Find Location

Enter Address

or  Click the button then click on the map
or use your current location

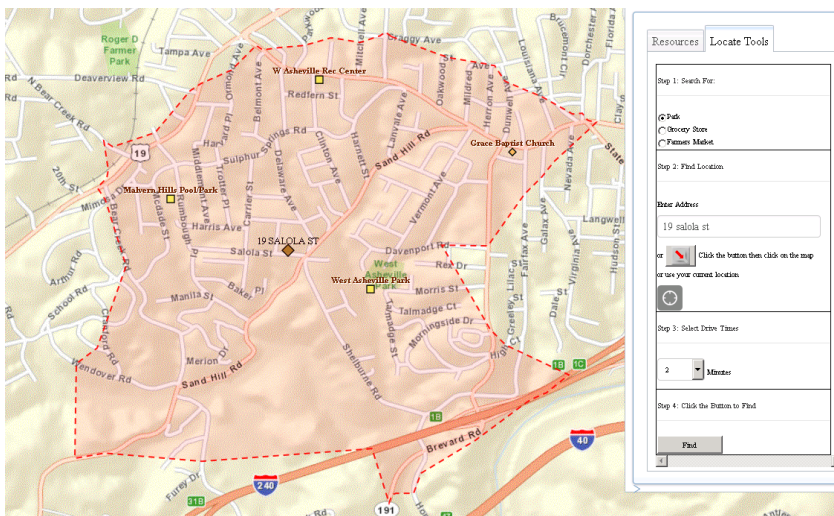


Step 3: Select Drive Times

1 Minutes

Step 4: Click the Button to Find

The Search Results: The area in red is the Drive Time and the yellow squares are the selected features within the search area.



To get more information about a feature, click on the feature on the map to display the information panel

